

# ANN PARSLEY SCHOOL OF DANCE

## DANCER STRAP T-SHIRT

T-SHIRT SAMPLE



BACK



### **SPELLS DANCER WHEN STUDENT IS FACING THE MIRROR**

\*\*\*PLEASE NOTE THAT IMAGES ARE NOT EXACT AND ARE ONLY TO GIVE A GENERAL IDEA OF WHAT ITEM WILL LOOK LIKE. COLOR, SIZE AND THE PLACEMENT OF ARTWORK MAY BE DIFFERENT. ITEMS ARE NON RETURNABLE AND NON-EXCHANGEABLE\*\*\*

WOMEN'S REGULAR FIT BURNOUT SHORT SLEEVE TSHIRT WITH LOW SCHOOP BACK AND THIN STRAP ACROSS THE BACK.

TEAL HEATHER WITH BLACK AND METALLIC SILVER SCREENPRINT

50% RAYON, 50% POLYESTER

YARN DYED, GARMENT WASHED

ADULT S-XL-NOT AVAILABLE IN YOUTH SIZES-SEE PAGE 3 FOR YOUTH STYLE IN THIS DESIGN

**PRICE: \$25.00**

ADULT SIZING CHART FOR DANCER STRAP T-SHIRT (IN INCHES)				
SIZE	ADULT S	ADULT M	ADULT L	ADULT XL
BUST	32-34	34-36	36-38	39-40
WAIST	26-28	28-30	30-32	32-34

**PULLOVER HOODIE**

**FRONT**



**BACK**



**SPELLS DANCER WHEN STUDENT IS FACING THE MIRROR**

**\*\*\*PLEASE NOTE THAT IMAGES ARE NOT EXACT AND ARE ONLY TO GIVE A GENERAL IDEA OF WHAT ITEM WILL LOOK LIKE. COLOR, SIZE AND THE PLACEMENT OF ARTWORK MAY BE DIFFERENT. ITEMS ARE NON RETURNABLE AND NON-EXCHANGEABLE\*\*\***

REGULAR FIT LONG SLEEVE PULLOVER HOODIE WITH DEEP V NECK AND KANGAROO FRONT POCKETS. SLEVE CUFFS AND BOTTOM BAND SET IN 1X1 RIB.

HEATHER GREY WITH BLACK AND METALLIC SILVER SCREEN PRINT ON FRONT

38% COTTON, 50% POLYESTER, 12% RAYON

FRONT MUFF POCKET, FIVE BUTTON PLACKET, RIBBED GUSSET, CUFF AND WAISTBAND

ADULT S-XL-YOUTH SIZES NOT AVAILABE-SEE PAGE 3 FOR YOUTH STYLE IN THIS DESIGN

**PRICE: \$28.00**

<b>ADULT SIZING CHART FOR HOODIE (IN INCHES)</b>				
<b>SIZE</b>	<b>ADULT S</b>	<b>ADULT M</b>	<b>ADULT L</b>	<b>ADULT XL</b>
<b>BUST</b>	32-34	34-36	36-38	39-40
<b>WAIST</b>	26-28	28-30	30-32	32-34

**DANCER T-SHIRT**

**T-SHIRT SAMPLE**



**ARTWORK**



**SPELLS DANCER WHEN STUDENT IS FACING THE MIRROR**

**\*\*\*PLEASE NOTE THAT IMAGES ARE NOT EXACT AND ARE ONLY TO GIVE A GENERAL IDEA OF WHAT ITEM WILL LOOK LIKE. COLOR, SIZE AND THE PLACEMENT OF ARTWORK MAY BE DIFFERENT. ITEMS ARE NON RETURNABLEN AND NON-EXCHANGEABLE\*\*\***

SKY TSHIRT WITH BLACK AND SILVER SCREENPRINT  
 50% COTTON, 50% POLYESTER  
 YOUTH XS-L AND ADULT S-XXL  
**PRICE: \$16.00**

YOUTH SIZING CHART FOR T-SHIRT (IN INCHES)					
SIZE	YOUTH XS	YOUTH S	YOUTH M	YOUTH L	
CHEST	31	34	36	38	
ADULT SIZING CHART FOR T-SHIRT (IN INCHES)					
SIZE	ADULT S	ADULT M	ADULT L	ADULT XL	ADULT XXL
CHEST	36	40	44	48	52

**LIGHTWEIGHT FLOWY TANK**

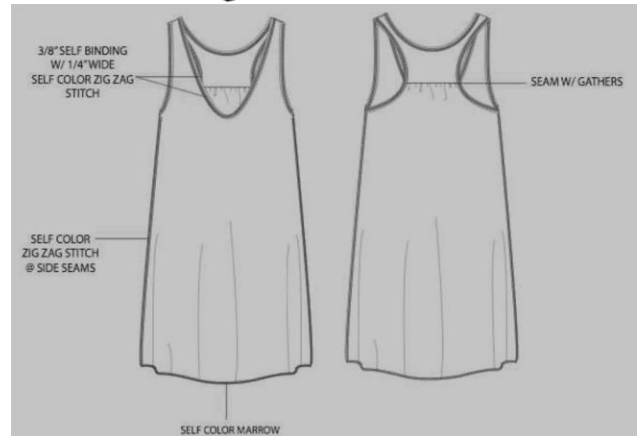
**TANK SAMPLE**



**ARTWORK-metallic silver font**



*ann parsley school of dance*



**\*\*\*PLEASE NOTE THAT IMAGES ARE NOT EXACT AND ARE ONLY TO GIVE A GENERAL IDEA OF WHAT ITEM WILL LOOK LIKE. COLOR, SIZE AND THE PLACEMENT OF ARTWORK MAY BE DIFFERENT. ITEMS ARE NON RETURNABLEN AND NON-EXCHANGEABLE\*\*\***

ROYAL BLUE LOOSE RACERBACK TANK WITH A LINE BODING AND SHEERING AT RACERBACK SEAM.

METALLIC SILVER SCREENPRINT

JERSEY FABRIC-POLYESTER/COTTON MIS

ADULT S-XL-YOUTH SIZES NOT AVAILABLE- SEE PAGE 5 FOR YOUTH STYLE IN THIS DESIGN

**PRICE: \$20.00**

ADULT SIZING CHART FOR FLOWY TANK (IN INCHES)				
SIZE	ADULT S	ADULT M	ADULT L	ADULT XL
BUST	31-33	34-36	37-39	39-41
REGULAR SIZE	0-4	4-8	8-10	10-12

**LOVE DANCE TANK**

**SAMPLE**



**ARTWORK-metallic silver font**



**\*\*\*PLEASE NOTE THAT IMAGES ARE NOT EXACT AND ARE ONLY TO GIVE A GENERAL IDEA OF WHAT ITEM WILL LOOK LIKE. COLOR, SIZE AND THE PLACEMENT OF ARTWORK MAY BE DIFFERENT. ITEMS ARE NON RETURNABLE AND NON-EXCHANGEABLE\*\*\***

ROYAL BLUE LOOSE LONG BOYFRIEND TANK IN TUNIC LENGTH. JUNIOR FIT.  
 METALLIC SILVER SCREENPRINT  
 100% COMBED RINGSPUN COTTON  
 YOUTH S-L, ADULT XS-XL  
**PRICE: \$16.00**

YOUTH SIZING CHART-TANK			
SIZE	YOUTH S	YOUTH M	YOUTH L
CLOTHING SIZE	6-8	10-12	14-16
CHEST	25-27	28-30	31-33

ADULT SIZING CHART FOR TANK (IN INCHES) JUNIOR FIT					
SIZE	ADULT XS	ADULT S	ADULT M	ADULT L	ADULT XL
BUST	30-31.5	32-33.5	34-35.5	36-38.5	42-43
REGULAR SIZE	0-1	3-5	7-9	11-13	15-17

**PANTS**

**SWEATPANT SAMPLE**



**REGULAR**



**ARTWORK**

DOWN LEFT LEG-**BLACK WRITING IS SILVER**



**\*\*\*PLEASE NOTE THAT IMAGES ARE NOT EXACT AND ARE ONLY TO GIVE A GENERAL IDEA OF WHAT ITEM WILL LOOK LIKE. COLOR, SIZE AND THE PLACEMENT OF ARTWORK MAY BE DIFFERENT. ITEMS ARE NON RETURNABLE AND NON-EXCHANGEABLE\*\*\***

**\*\*\*SWEATPANT DESIGN WILL GO DOWN LEFT SIDE OF LEG\*\*\***

FLEECE PANTS WITH BLUE AND METALLIC SILVER SCREEN PRINTING

68% COTTON, 32% POLYESTER

ELASTIC WAISTBAND AND DRAW CORD, FLARED LEG

YOUTH S-L AND ADULT XS-3XL

**PRICE: \$30.00**

**YOUTH SIZING CHART-FLARE PANTS**

SIZE	YOUTH S	YOUTH M	YOUTH L
PANT SIZE	7-8	10-12	14-16

**ADULT SIZING CHART-FLARE PANTS**

SIZE	ADULT XS	ADULT S	ADULT M	ADULT L	ADULT XL	ADULT XXL	ADULT 3XL
PANT SIZE	4	6	8	10	12	14	16

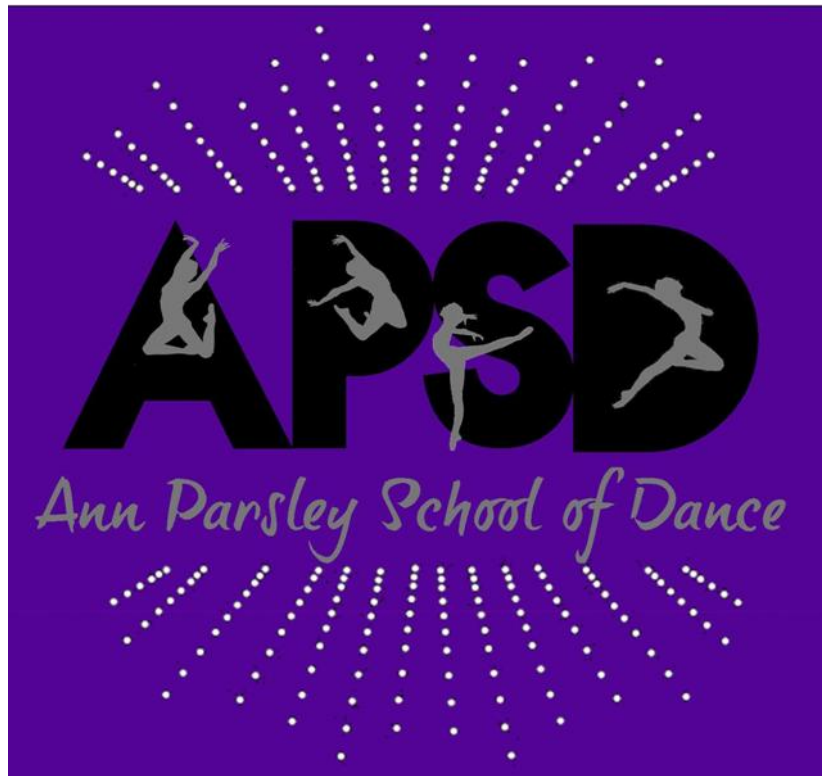
**WARM UP JACKET**

**FRONT**



**APSD DESIGN WITH DANCERS ON LEFT CHEST  
(SAME AS BACK WITHOUT RHINESTONES)  
EMBROIDERED NAME ON RIGHT CHEST ADD \$5.00**

**ARTWORK ON BACK AND LEFT FRONT CHEST-GRAY PRINT IS METALLIC SILVER-RHINESTONE BURST ON TOP AND BOTTOM**



**BACK**



**\*\*\*PLEASE NOTE THAT IMAGES ARE NOT EXACT AND ARE ONLY TO GIVE A GENERAL IDEA OF WHAT ITEM WILL LOOK LIKE. COLOR, SIZE AND THE PLACEMENT OF ARTWORK MAY BE DIFFERENT. ITEMS ARE NON RETURNABLEN AND NON-EXCHANGEABLE\*\*\***

- EV-tec, dry-Excel™ Perform moisture-management polyester textured knit
- Tri-color design with Tricotex™ inserts and contrast top-stitching
- Raglan sleeves for enhanced mobility
- Modern, partial rib-trim cuffs
- Front zippered and dual inside pockets
- Adjustable open bottom with concealed shockcord and drop tail hem

**PURPLE WITH WHITE STITCH AND BLACK CONTRAST METALLIC SILVER AND BLACK SCREENPRINT WITH RHINESTONE BURST ON BACK**

**YOUTH S-XL AND ADULT XS-XXL**

**PRICE: \$60.00**

**WITH EMBROIDERED NAME \$65.00**

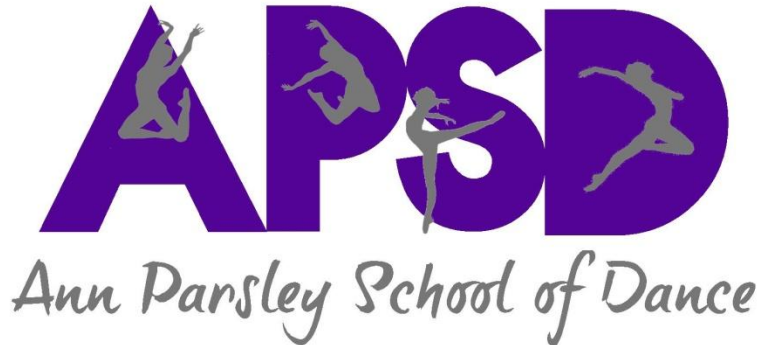
YOUTH SIZING CHART-JACKET (IN INCHES)						
SIZE	YOUTH S	YOUTH M	YOUTH L	YOUTH XL		
CHEST	26-27	28-29	30-31	32-33		
WAIST	22-23	24-25	26-27	28-30		
ADULT SIZING CHART-WOMEN'S JACKET (IN INCHES)						
SIZE	ADULT XS	ADULT S	ADULT M	ADULT L	ADULT XL	ADULT 2XL
WAIST	25-26	27-28	29-30	31-32	33-34	35-36
SIZE	0-2	4-6	8-10	12-14	16-18	20-22

**WARM UP PANTS**

**WARM UP PANT SAMPLE**



**ARTWORK  
GRAY PRINT IS METALLIC SILVER**



**\*\*\*PLEASE NOTE THAT IMAGES ARE NOT EXACT AND ARE ONLY TO GIVE A GENERAL IDEA OF WHAT ITEM WILL LOOK LIKE. COLOR, SIZE AND THE PLACEMENT OF ARTWORK MAY BE DIFFERENT. ITEMS ARE NON RETURNABLE AND NON-EXCHANGEABLE\*\*\***

- EV-tec, dry-Excel Perform polyester textured knit
- Ladies trend forward fit with low-rise waist and straight leg
- Wide elasticized drawstring waist
- Open bottom hems with zippers
- Coordinating jacket available

**BLACK WARM UP PANTS WITH PURPLW AND METALLIC SILVER SCREEN PRINTING  
YOUTH S-L AND ADULT XS-XXL**

**PRICE: \$42.00**

YOUTH SIZING CHART-PANTS (IN INCHES)				
SIZE	YOUTH S	YOUTH M	YOUTH L	YOUTH XL
CHEST	26-27	28-29	30-31	32-33
WAIST	22-23	24-25	26-27	28-30

ADULT SIZING CHART-WOMEN'S PANTS (IN INCHES)						
SIZE	ADULT XS	ADULT S	ADULT M	ADULT L	ADULT XL	ADULT 2XL
WAIST	25-26	27-28	29-30	31-32	33-34	35-36
SIZE	0-2	4-6	8-10	12-14	16-18	20-22